

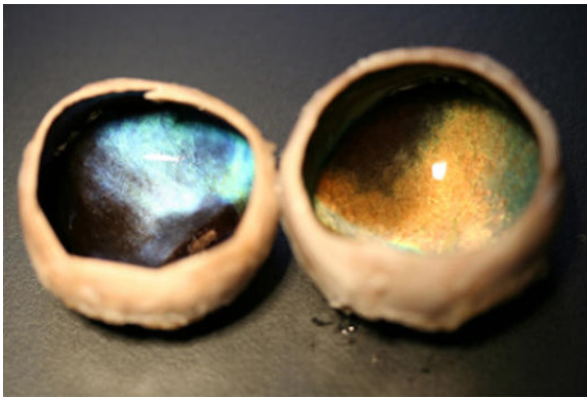
Bright eyes: Reindeers' eyes change from blue to gold with Arctic seasons

Date: October 29, 2013

Source: Biotechnology and Biological Sciences Research Council

Summary: Researchers have discovered the eyes of Arctic reindeer change color through the seasons from gold to blue, adapting to extreme changes of light levels in their environment and helping detect predators. It is the first such color change observed in mammals.

FULL STORY



The difference in eye colour between summer and winter is clear in this picture.

Credit: Glen Jeffery

Researchers have discovered the eyes of Arctic reindeer change colour through the seasons from gold to blue, adapting to extreme changes of light levels in their environment and helping detect predators.

The Biotechnology and Biological Sciences Research Council (BBSRC) funded team from UCL (University College London), and the University of Tromsø, Norway, showed that the colour change helps reindeer to see better in the continuous daylight of summer and continuous darkness of Arctic winters, by changing the sensitivity of the retina to light.

Arctic reindeer, like many animals, have a layer of tissue in the eye called the tapetum lucidum (TL) which lies behind the retina and reflects light back through it to enhance night vision.

By changing its colour the TL reflects different wavelengths of light.

In the bright light of summer the TL in Arctic reindeer is gold, similar to many other mammals, which reflects most light back directly through the retina.

However by winter it has changed to a deep blue which reflects less light out of the eye.

This change scatters more light through photoreceptors at the back of the eye, increasing the sensitivity of the retina in response to the limited winter light

The team believes this would be an advantage in the prolonged murk of winter, allowing reindeer to more easily detect moving predators and forage.

Lead researcher Professor Glen Jeffery from UCL, said: "This is the first time a colour change of this kind has been shown in mammals. By changing the colour of the TL in the eye reindeer have flexibility to cope better with the extreme differences between light levels in their habitat between seasons.

"This gives them an advantage when it comes to spotting predators, which could save their lives."

The colour change may be caused by pressure within the eyes. In winter pressure in the reindeers' eyes is increased, probably caused by permanent pupil dilation, which prevents fluid in the eyeball from draining naturally. This compresses the TL, reducing the space between collagen in the tissue and thus reflecting the shorter wavelengths of the blue light common in Arctic winters.

Previous work from Professor Jeffery and Norwegian colleagues from Tromsø had shown that Arctic reindeer eyes can also see ultraviolet, which is abundant in Arctic light but invisible to humans, and that they use this to find food and see predators.

The blue reflection from the winter eye is likely to favour ultra-violet sensitivity.

Story Source:

Materials provided by **Biotechnology and Biological Sciences Research Council**. *Note: Content may be edited for style and length.*

Journal Reference:

1. K.-A. Stokkan, L. Folkow, J. Dukes, M. Neveu, C. Hogg, S. Siefken, S. C. Dakin, G. Jeffery. **Shifting mirrors: adaptive changes in retinal reflections to winter darkness in Arctic reindeer**. *Proceedings of the Royal Society B: Biological Sciences*, 2013; 280 (1773): 20132451 DOI: 10.1098/rspb.2013.2451

Cite This Page:

MLA

APA

Chicago

Biotechnology and Biological Sciences Research Council. "Bright eyes: Reindeers' eyes change from blue to gold with Arctic seasons." ScienceDaily. ScienceDaily, 29 October 2013.

<www.sciencedaily.com/releases/2013/10/131029220802.htm>.

RELATED STORIES



Lizard Tail Adaptations May Reflect Predators' Color Vision Capabilities

June 22, 2016 — Juveniles of numerous lizard species have a vividly blue-colored tail that likely serves to deflect predator attacks toward the detachable tail rather than the lizard's body. Now researchers ...

[read more »](#)



How Early Mammals Evolved Night Vision to Avoid Predators

June 20, 2016 — Early mammals evolved in a burst during the Jurassic period, adapting a nocturnal life-style when dinosaurs were the dominant daytime predator. How these early mammals evolved night vision to find ... **read more** »



Seeing the Sunnier Side of Life: Scientists Bring a Whole New Meaning to Winter Blues

Aug. 4, 2015 — Scientists have shed new light on how humans process color -- revealing that we see things differently in winter compared with summer. The researchers examined how our color perception changes ... **read more** »

The Fine-Tuning of Human Color Perception

Dec. 18, 2014 — The evolution of trichromatic color vision in humans occurred by first switching from the ability to detect UV light to blue light (between 80-30 MYA) and then by adding green-sensitivity (between ... **read more** »