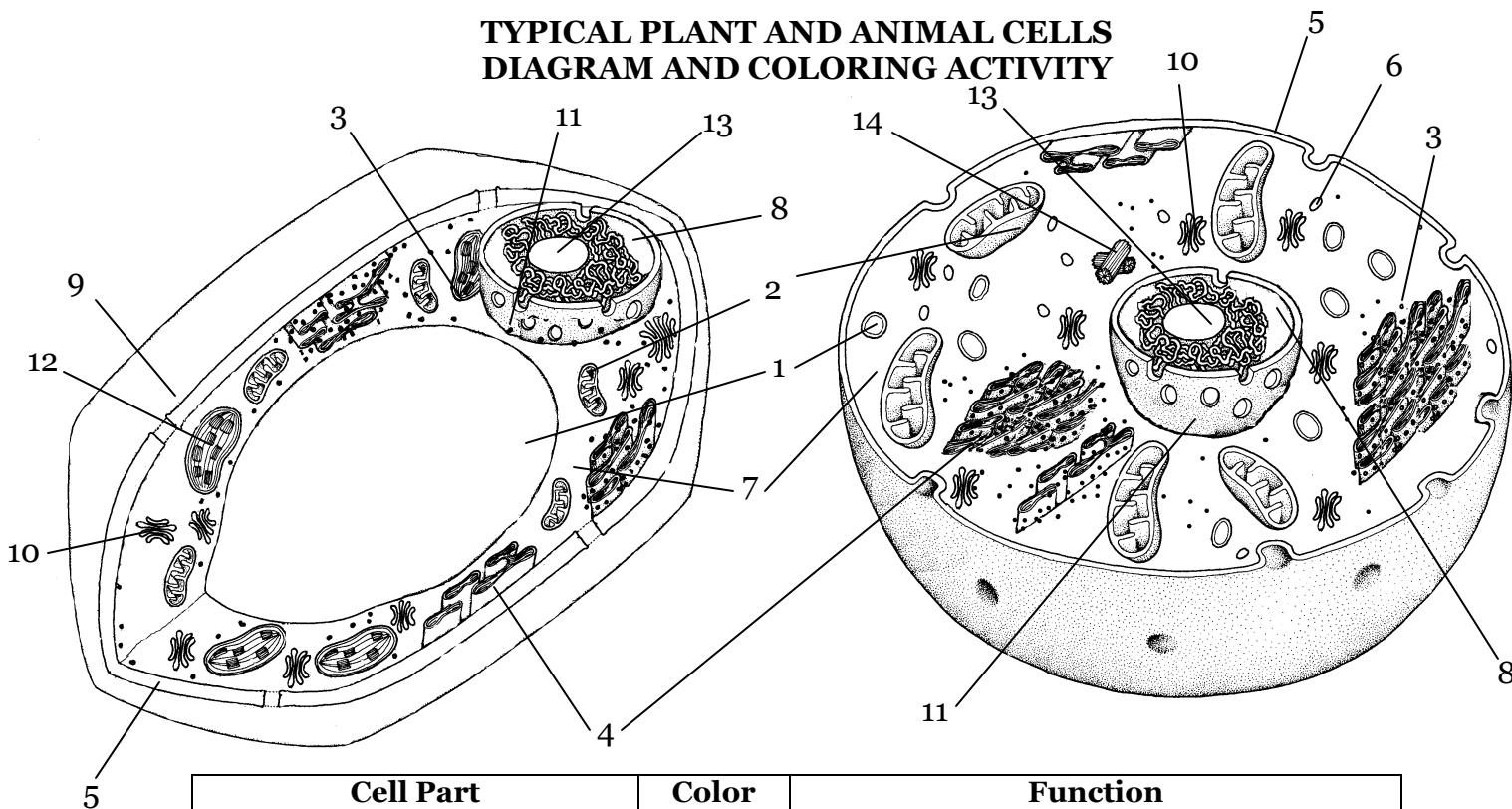


Name _____

Date _____

**TYPICAL PLANT AND ANIMAL CELLS
DIAGRAM AND COLORING ACTIVITY**



Cell Part	Color	Function
1. Vacuole	Grey	
2. Mitochondria	Orange	
3. Ribosome	Black	
4. Endoplasmic Reticulum	Dark Blue	
5. Cell Membrane	Red	
6. Lysosome	Light Green	
7. Cytoplasm	Yellow	
8. Nucleus	Light Purple	
9. Cell Wall	Brown	
10. Golgi Body	Light Blue	
11. Nuclear Membrane	Pink	
12. Chloroplast	Dark Green	
13. Nucleolus	White	
14. Centriole	Dark Purple	

ANSWER KEY

Cell Part	Color	Function
1. Vacuole	Grey	Storage of food, water, wastes and enzymes
2. Mitochondria	Orange	Converts stored food into energy
3. Ribosome	Black	Produces proteins
4. Endoplasmic Reticulum	Dark Blue	Transport system within the cell
5. Cell Membrane	Red	Controls what enters and leaves the cell
6. Lysosome	Light Green	Contains enzymes that break down things
7. Cytoplasm	Yellow	Supports the cell, allows parts to move
8. Nucleus	Light Purple	Control center
9. Cell Wall	Brown	Supports and protects plant cell
10. Golgi Body	Light Blue	Package and transport proteins from the cell
11. Nuclear Membrane	Pink	Controls what enters and leaves the nucleus
12. Chloroplast	Dark Green	Makes chemical energy from sunlight
13. Nucleolus	White	Controls cell reprod. and makes ribosomes
14. Centrioles	Dark Purple	Aids in cell division