

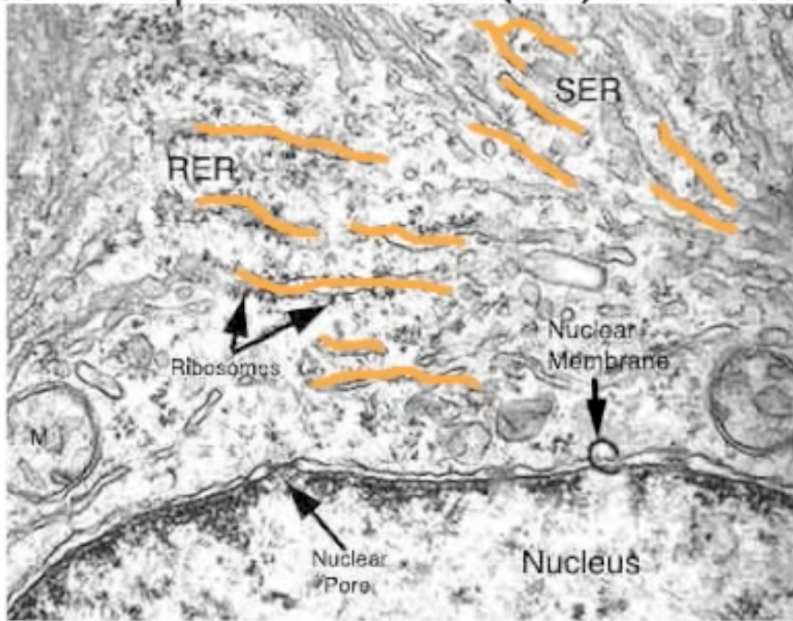
# MICROGRAPHS

Watch the following video:

Identify structures from electron micrographs of liver cells

<https://www.youtube.com/watch?v=k0YgEpA-62A>

Rough Endoplasmic Reticulum (RER),  
Smooth Endoplasmic Reticulum (SER) and Ribosomes



Golgi apparatus and Lysosomes

